



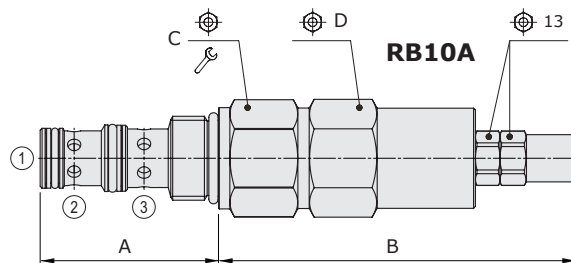
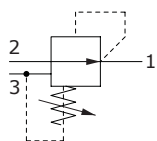
## RB..A type pressure reducing valves - 3 way

- Direct acting
- Without relieving
- Spool type
- From SAE08 to SAE10 cavities

Technical specifications and diagrams are measured with mineral oil of 46 cSt viscosity at 40°C (104°F) temperature.

	RB08A	RB10A
Nominal flow	8 l/min (0.3 US gpm)	30 l/min (7.9 US gpm)
Max. pressure		line 1=150 bar (2175 psi) line 2=350 bar (5100 psi)
Oil leakage	at 100 bar (1450 psi)	10 cm <sup>3</sup> /min (0.61 in <sup>3</sup> /min)      40 cm <sup>3</sup> /min (2.44 in <sup>3</sup> /min)
Fluid		mineral based oil
Viscosity		10-200 cSt
Max level of contamination		20/18/14 ISO4406
Fluid temperature	with NBR seals with FPM seals	from -20°C (-4°F) to 80°C (176°F) from -20°C (-4°F) to 100°C (212°F)
Environmental temp. for working conditions		from -20°C (-4°F) to 50°C (122°F)
Cavity	SAE 08/3	SAE 10/3
Weight	0.240 kg (0.53 lb)	0.360 kg (0.79 lb)

NOTE - For different conditions, please contact Walvoil Sales Dpt.

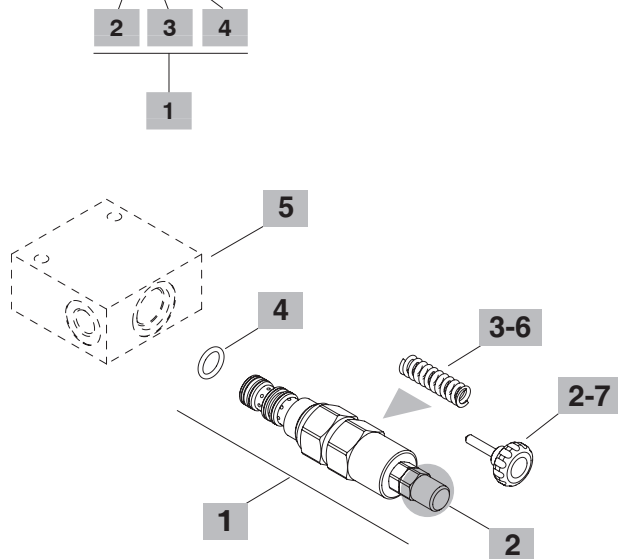


Valve type	A		B		C	D	13	Nm	lbft
	mm	in	mm	in					
RB08A/OS	40.8	1.60	79.5	3.13	24	24	30	22	
RB10A/OS	47.2	1.86	94.5	3.72	27	27	50	37	

For dimensions with different type of adjustment see page 212

### Ordering codes and description composition

#### RB08A/0S2B



#### 3 Pressure range

Standard setting is referred to at 5 l/min (1.32 US gpm) flow

TYPE	DESCRIPTION
<b>1</b>	Pressure range 5÷50 bar (72.5÷725 psi); Std. setting 30 bar (435 psi)
<b>2</b>	Pressure range 20÷100 bar (290÷1450 psi); Std. setting 50 bar (725 psi)
<b>3</b>	Pressure range 50÷150 bar (725÷2175 psi); Std. setting 100 bar (1450 psi)

#### 4 Seals

TYPE	DESCRIPTION
<b>B</b>	<b>NBR (Buna)</b> o-ring seals, std configuration
<b>V</b>	<b>FPM (Viton)</b> o-ring seals, contact Sales Dept.

#### 5 Valve body

TYPE	CODE	DESCRIPTION
<b>SAE 08/3-SAE6</b>	3CC0830J11	Aluminium body for cavity 08 valve, SAE6 std thread
<b>SAE 10/3-SAE8</b>	3CC1030K11	Aluminium body for cavity 10 valve, SAE8 std thread

Note: aluminium body can stand up to 210 bar (3050 psi)  
For steel bodies or different threading see from page 217

#### 6 Springs

TYPE	CODE	DESCRIPTION
<b>SAE cavity 08/3</b>		
<b>1</b>	3ML1103600	Pressure range <b>1</b> - no band
<b>2</b>	3ML1103601	Pressure range <b>2</b> - no band
<b>3</b>	3ML1104000	Pressure range <b>3</b> - no band
<b>SAE cavity 10/3</b>		
<b>1</b>	3ML1144601	Pressure range <b>1</b> - green band
<b>2</b>	3ML1144602	Pressure range <b>2</b> - blue band
<b>3</b>	3ML1144603	Pressure range <b>3</b> - red band

#### 7 Accessories

TYPE	CODE	DESCRIPTION
-	4VL2407100	handwheel

#### 1 Cartridges

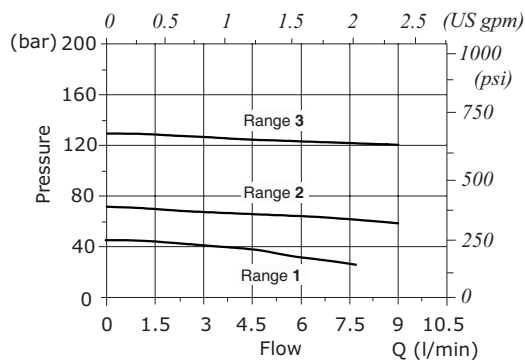
TYPE	CODE	DESCRIPTION
<b>SAE cavity 08/3</b>		
<b>RB08A/0S1B</b>	0RB08002002	Screw adjustment, pressure range <b>1</b>
<b>RB08A/0S2B</b>	0RB08002000	Screw adjustment, pressure range <b>2</b>
<b>SAE cavity 10/3</b>		
<b>RB10A/0S1B</b>	0RB10002002	Screw adjustment, pressure range <b>1</b>
<b>RB10A/0S2B</b>	0RB10002001	Screw adjustment, pressure range <b>2</b>

#### 2 Adjustments

TYPE	DESCRIPTION
<b>S</b>	Screw
<b>V</b>	With handwheel see point <b>7</b>

### Rating diagrams

RB08A pressure reducing vs. flow 2->1



RB10A pressure reducing vs. flow 2->1

